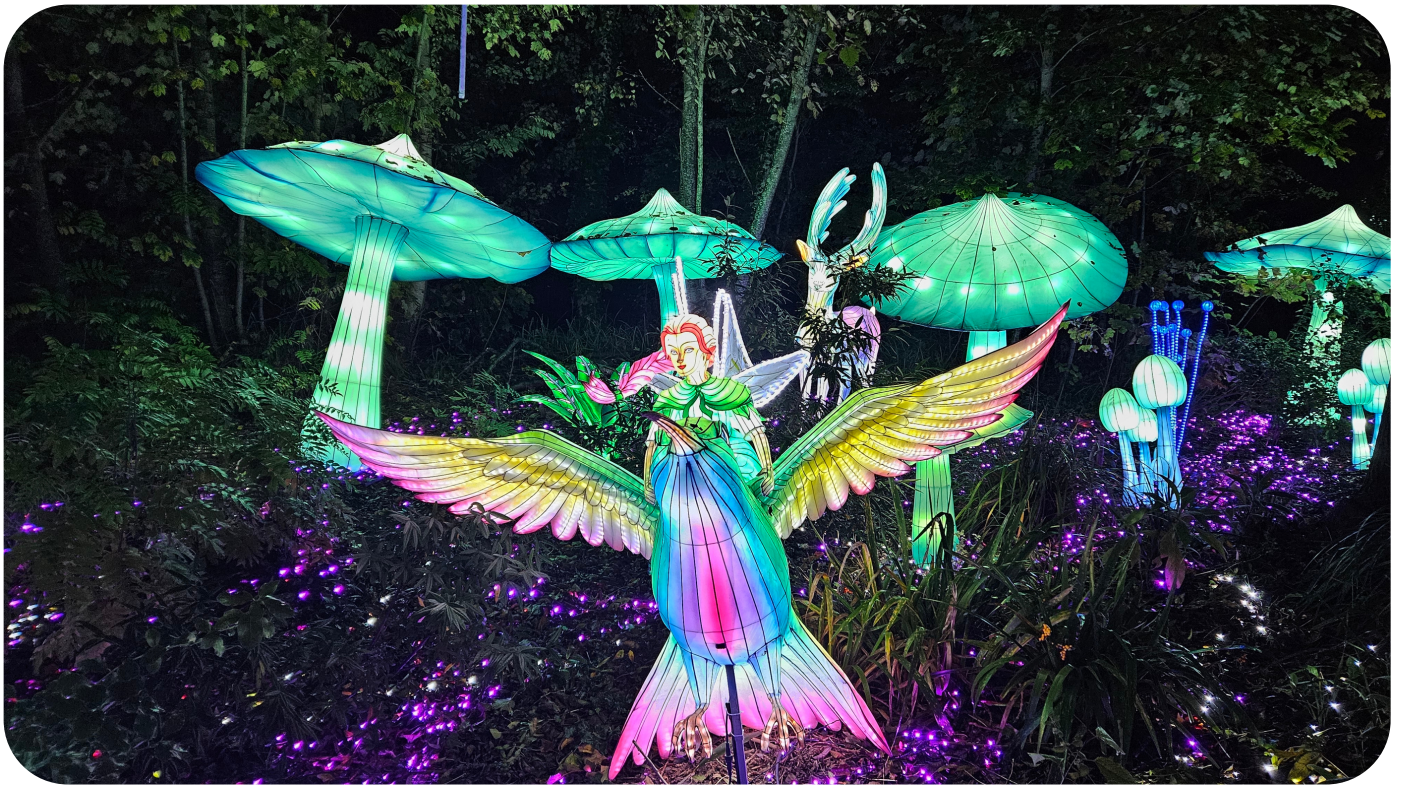




# WILD LIGHTS

# SENSORY FRIENDLY NIGHT





Wild Lights is an exciting event at Dublin Zoo held at night time!

This year is all about 'The Enchanted Zoo' and you will see thousands of light sculptures called lanterns in the shape of animals, trees, and magical creatures!



Wild Lights is an outdoor event.

Everyone needs to wear warm clothes as it will be cold!

Guide Assistance / Companion Dogs are NOT allowed access to the Zoo. These dogs are not trained to cope with the scent of animals at the Zoo. While everyone is at Wild Lights, dogs will enjoy an activity of their own.

If you have a Guide Assistance /  
Companion Dog, fill in what  
they'll be doing while you're  
exploring 'The Enchanted Zoo' at  
Dublin Zoo's Wild Lights!

---

---

---

---

---

---

---

---

---

---



Everyone who drove their car will park in the Lord's Walk car park once they arrive.

If this car park is full you may need to park in a different car park.



There will be big lights along the path from the car park to the entrance to the Zoo.

These may be a little noisy.



Once you get to the entrance of Dublin Zoo, there may be a queue to get in and you may need to wait. It's important that you only arrive at the timeslot you booked.

You can bring some toys or books to look at while you wait but please note, balloons and sparklers are not allowed at Dublin Zoo.



When you get to the top of the queue, the friendly staff in red coats will scan your tickets.

Now its time to go in!





When you enter into the Zoo, there will be a security check of your bag.

You will also be given a wristband to wear. It is important that these wristbands are completed with relevant carer's details.



After the security check, you can now enter into 'The Enchanted Zoo'.

You will have a choice of three pathways to explore first. You can explore each of these at your own pace.

You will hear music and noises and there will be lots to look at, including a cauldron with mystical smoke and a light projection on the lake. Please be aware that there may be a chance of water spray back from this.

Everyone should remember not to touch the lights or lanterns.

# Wild Lights

AT DUBLIN ZOO

# THE ENCHANTED ZOO

- Restaurants
- Refreshment points
- Toilets
- Accessible toilets
- Changing places toilet
- Baby changing facilities
- Baby feeding room
- First aid and lost children
- Defibrillators
- Gift shops
- Picnic areas
- Water refill stations
- Smoking/vaping shelters
- Services route

**Open route** explore as you like

|                 |                    |
|-----------------|--------------------|
| Candyland       | Magical Sea World  |
| Amazing Animals | Dream Universe     |
| Gnome Village   | Rainbow Garden     |
| Tropical Way    | Mystical Creatures |

- Calm space
- Smelly locations
- Crowded locations
- Moving lanterns
- Light projection on water feature, with chance of water spray back
- loud noise
- Music locations

D U B L I N

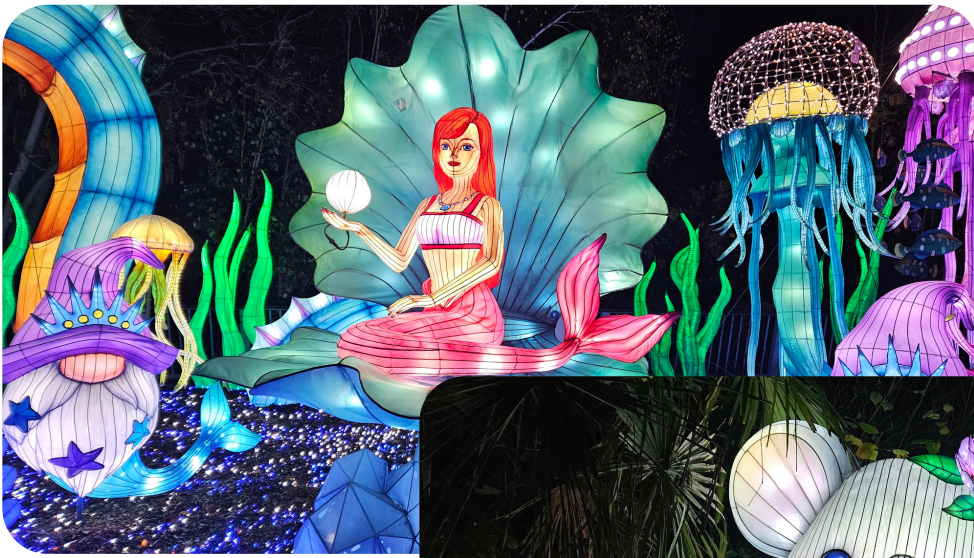


A map has been created for the Wild Lights Sensory Friendly Evening. This will be emailed to visitors and is also available on the Dublin Zoo website. It is important to look at the map before you visit 'The Enchanted Zoo' and plan your visit.



Nearly all of the animals at Dublin Zoo will be in bed with their curtains over their windows, so it is very unlikely you will see any animals....

...but if you're lucky, you might hear some noises like the lions roaring or the sea lions barking as you walk past their habitats.



There will be music playing from green speakers as you explore 'The Enchanted Zoo'.

There are also some lanterns that move.

If the lights or noise bother or upset you, you can let your group know and move to another area.



All throughout  
'The Enchanted Zoo', you may  
see the nocturnal keepers, the  
Zoo gnomes. These are the  
guardians of the mystical  
animals and creatures and are  
only visible in the Zoo at night!

Keep a look out for them and  
see how many you can find!



If you need a bathroom break, you can ask your group to look for the toilet icon on the blue signs to show the nearest toilet.

You might hear some loud noises from the hand dryers.

There is also a Changing Places facility in the Discovery & Learning Centre.



## **ZOOTING / CALM SPACE**



If you need a break from the event, you can ask to go to one of our zooting rooms, which are indicated on the Zoo map and by the sign shown above.

A zooting room is a quiet space that can help you feel calm. These are located in the Discovery & Learning Theatre and Meerkat Restaurant.





If you get hungry, there will be lots of places for you to get some food, such as hotdogs and burgers, chicken from the Chicken Hut, crepes from Cove, and snacks from the Picnic Bench or the vending machines.



There will be stalls selling toys and Christmas decorations along the way.



You will pass the playgrounds throughout the Zoo, but they will be closed.

You can visit the playgrounds the next time you visit Dublin Zoo during the day!



Before you leave, you can visit the gift shop where there are lots of different toys and gifts on sale.

You may need to wait in line to purchase any items, which may take some time.

The shop may be noisy and crowded.



When it is time to leave Wild Lights, you will exit through the turnstiles.

The exit may be noisy and crowded.



Wild Lights is a great way to celebrate the holiday season!

Everyone at Dublin Zoo looks forward to seeing you!